

Title

Left atrial ejection fraction and outcomes in heart failure with preserved ejection fraction

Journal

The International Journal of Cardiovascular Imaging

Names of authors and affiliations

Prathap Kanagala^{a, b} – MBBS, PhD pkk12@leicester.ac.uk

Jayanth R. Arnold^a – MBChB, DPhil jra14@leicester.ac.uk

Adrian S.H. Cheng^c – MBBS, MD adrianshcheng@gmail.com

Anvesha Singh^a – MBChB, PhD as707@leicester.ac.uk

Jamal N. Khan^a – MBChB, PhD mally777@hotmail.com

Gaurav S. Gulsin^a – gg149@leicester.ac.uk

Jing Yang^d – PhD jing.yang1@bms.com

Lei Zhao^d – PhD lei.zhao2@bms.com

Pankaj Gupta^a – DPB, FRCPath pankaj_gupta54@hotmail.com

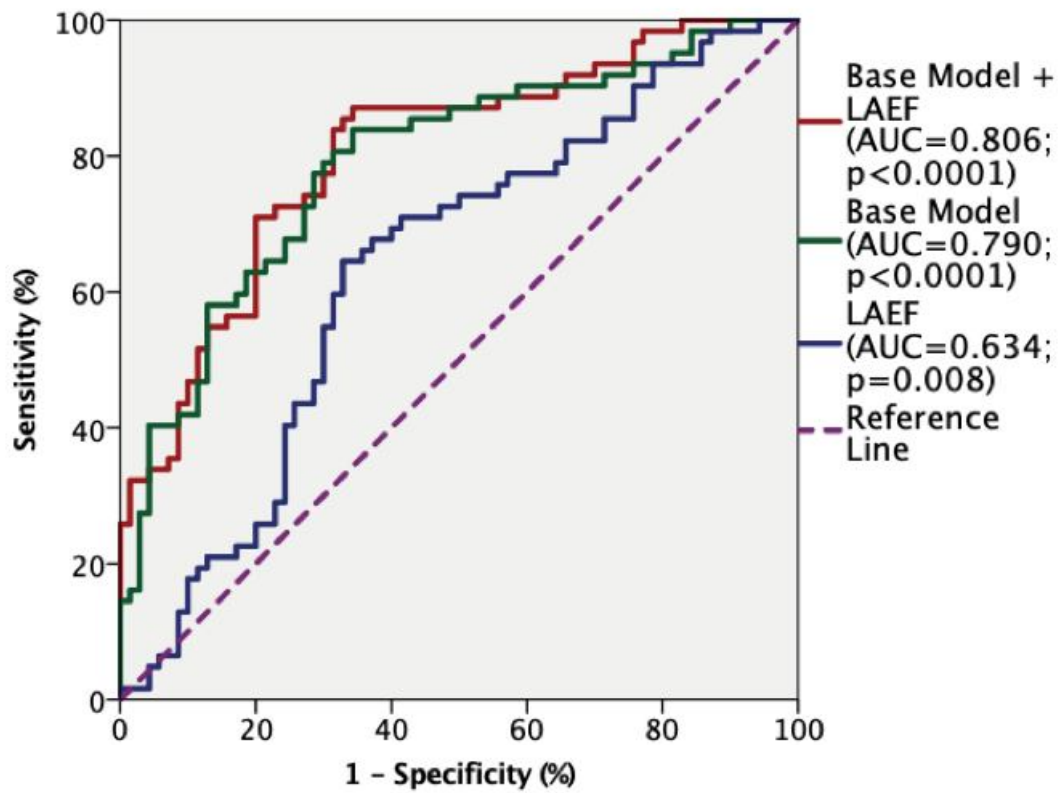
Iain B. Squire^a – MBChB, MD is11@leicester.ac.uk

Leong L. Ng^a – MB B Chir, MD lln1@leicester.ac.uk

Gerry P. McCann^a – MBChB, MD gpm12@leicester.ac.uk

From the Department of Cardiovascular Sciences, University of Leicester, National Institute for Health Research (NIHR) Leicester Biomedical Research Centre, Leicester, United Kingdom^a, Aintree University Hospital, Liverpool, United Kingdom^b and Kettering General

Hospital NHS Foundation Trust, Kettering, United Kingdom^c. Bristol-Myers Squibb,
Princeton, New Jersey, USA^d



Online Resource Supplementary Fig 1. Receiver operator characteristics analysis of the base clinical model, LAEF and the combined model to predict outcomes