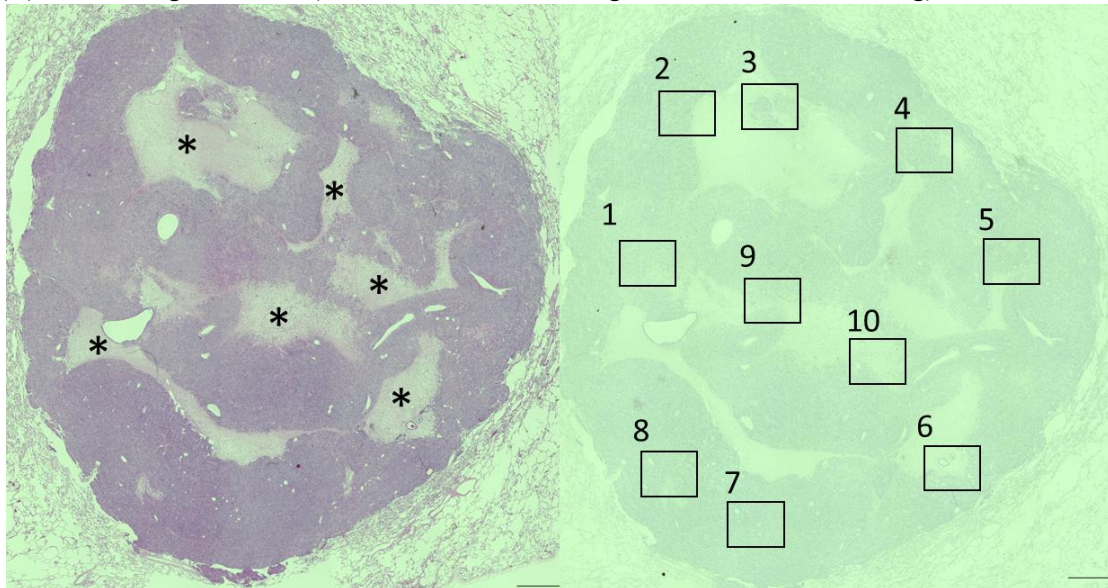


## Supplemental figures

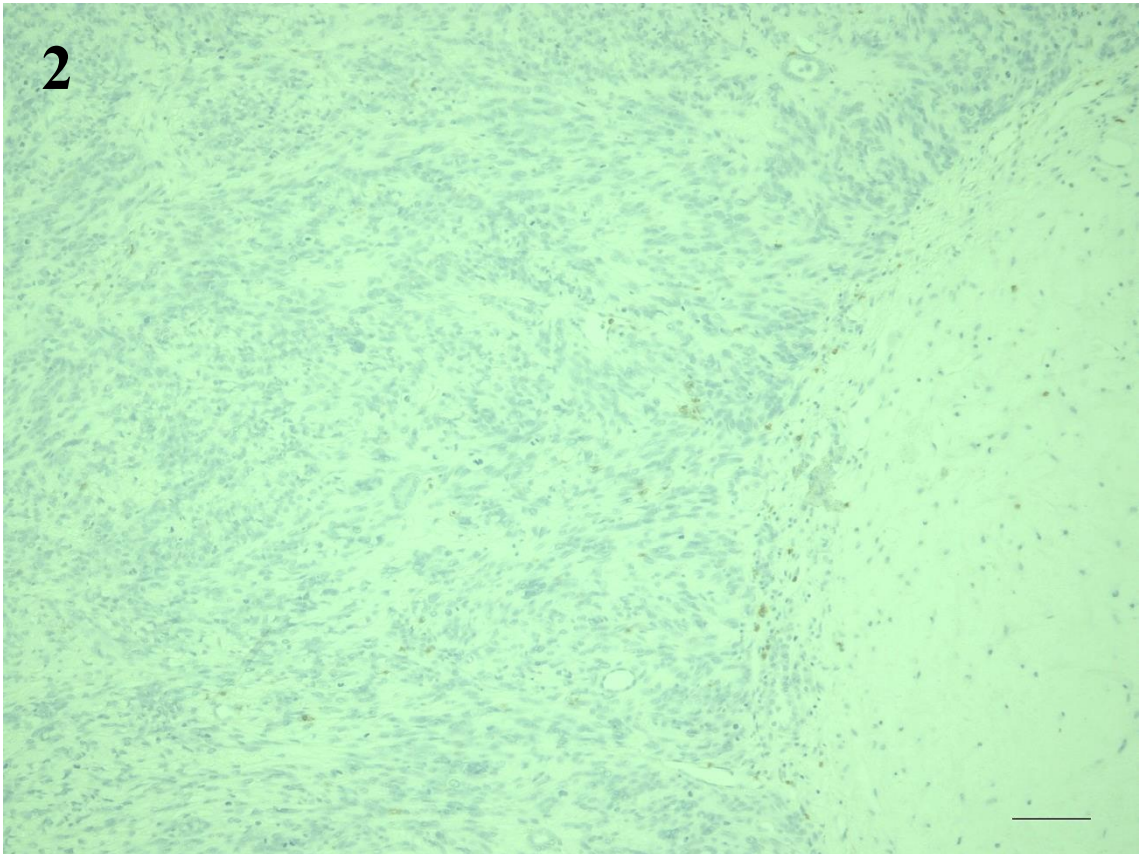
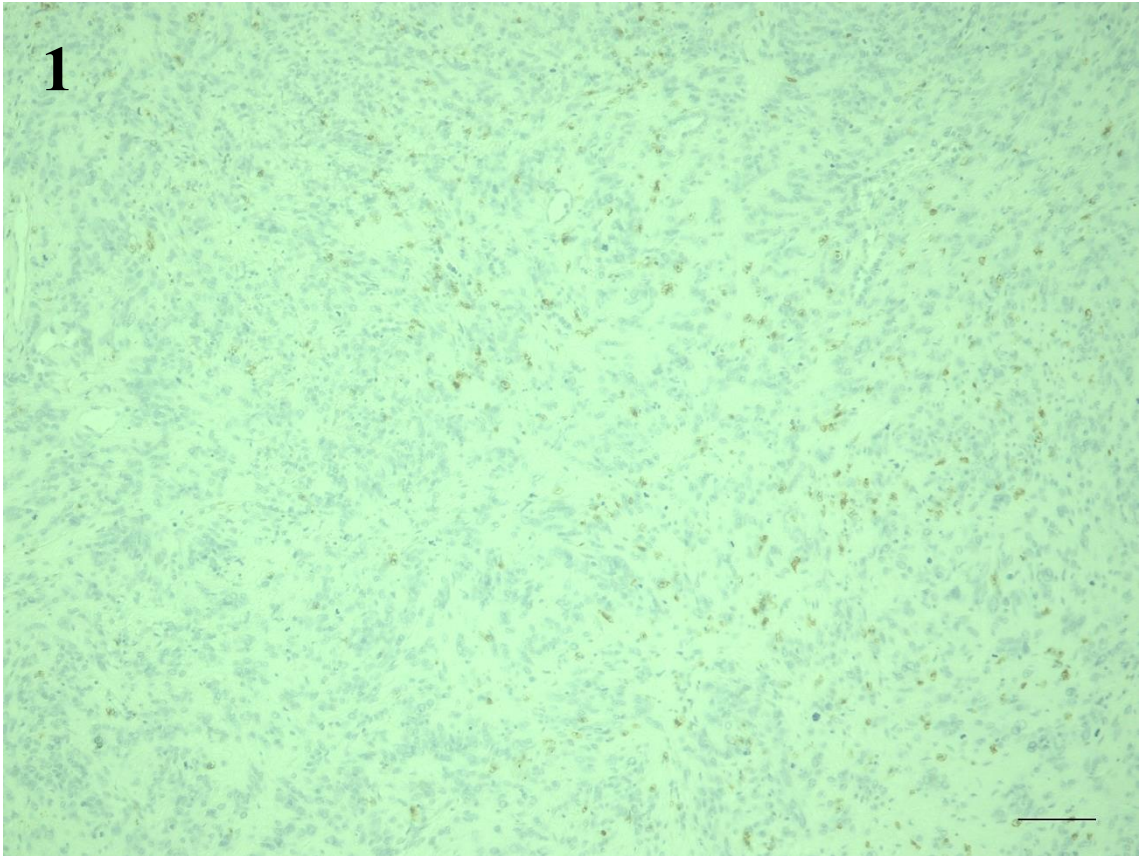
We present other multiple points of pathological findings of primary uterine lesion, resected spinal metastasis, and resected lung metastasis as follows in detail. These pathological findings revealed tumor necrosis and significantly increased infiltration of CD8+ T lymphocyte into tumor tissue at shrunk lung metastasis (A). Slight infiltration of CD8+ T lymphocyte in both L1 (B) and primary uterine lesion (C) was observed. Infiltration of CD8+ T lymphocyte was observed at the outside of the resected spinal metastasis (B3.6). However, slight infiltration of CD 8 T lymphocytes into the tumor tissue was observed (B1.2.4.5.7). The ratio of tumor necrosis compared to the whole area of the tumor was approximately 18 %. Total number of CD8 + cells per ten high power fields was 347 cells (lung metastasis), 9 cells (L1), and 15 cells (primary uterine lesion).

(A) Shrunk lung metastasis (Hematoxilin/eosin staining and CD 8 immunostaining)

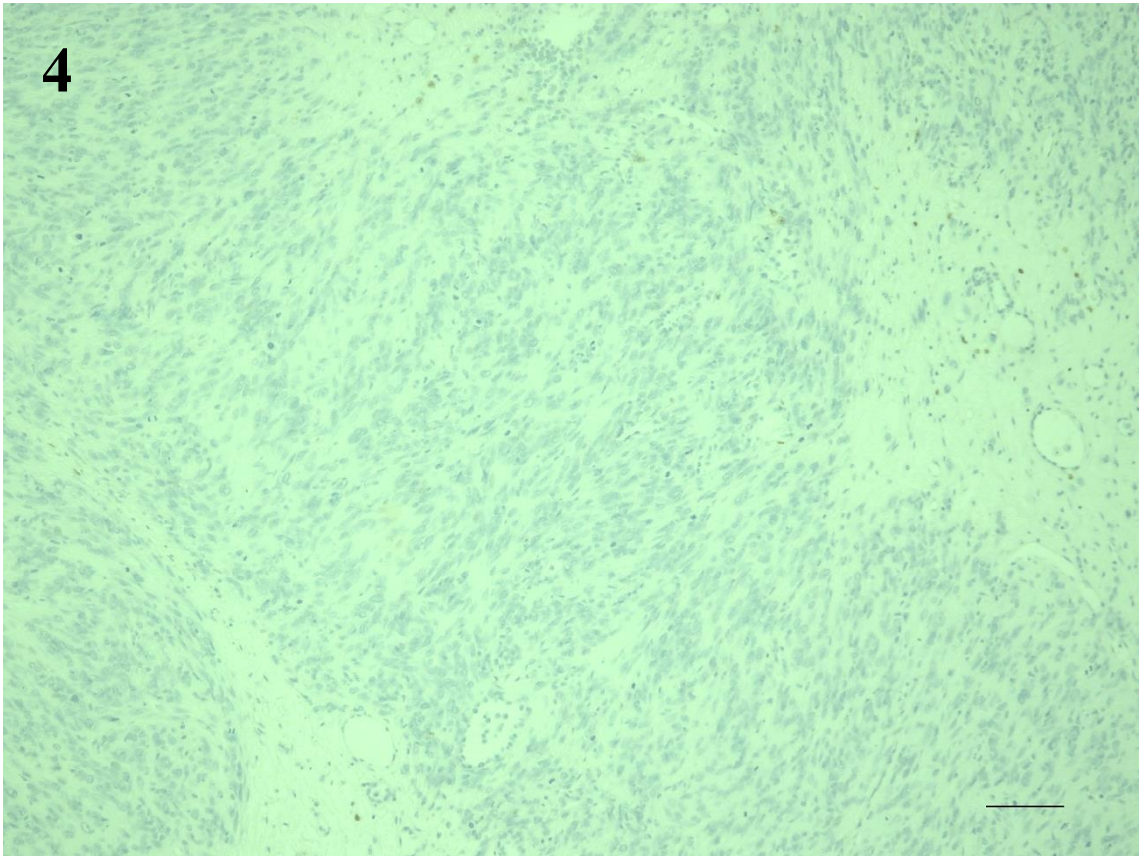
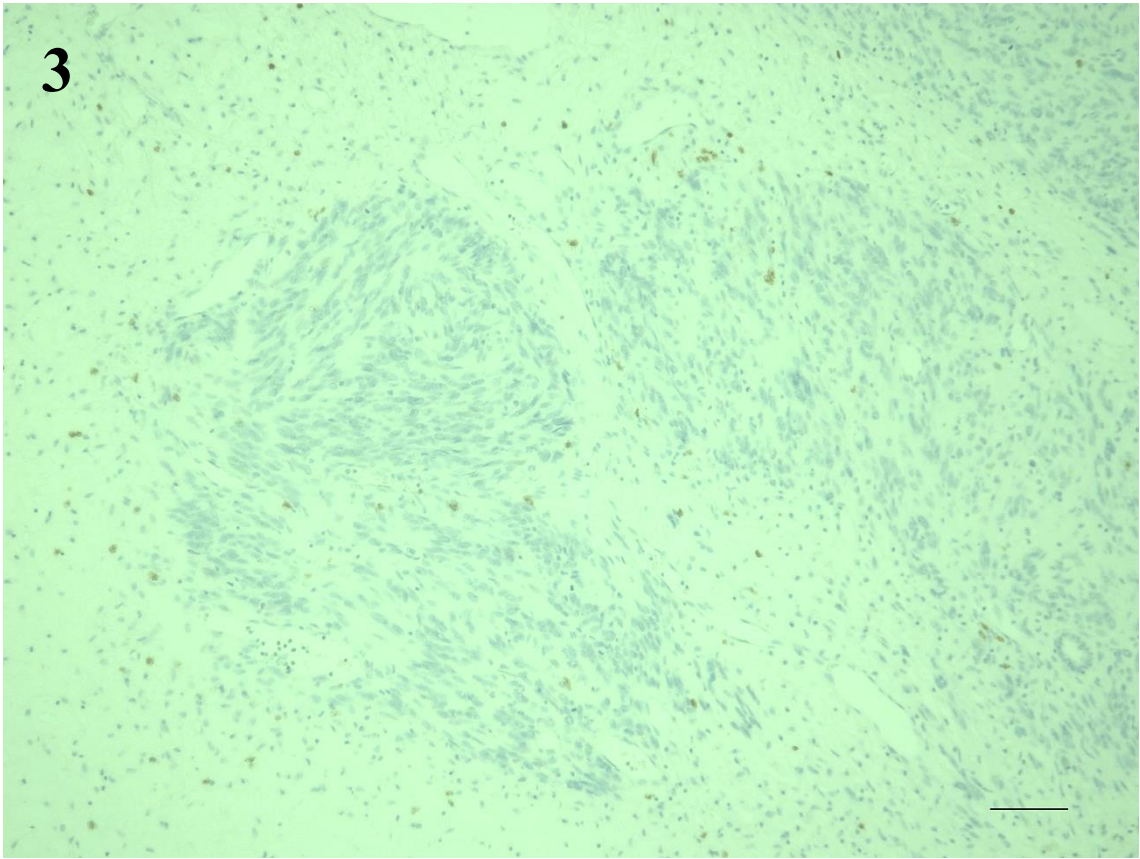


The asterisk indicates tumor necrosis. Scale bar corresponds to 1000  $\mu\text{m}$ . (above)

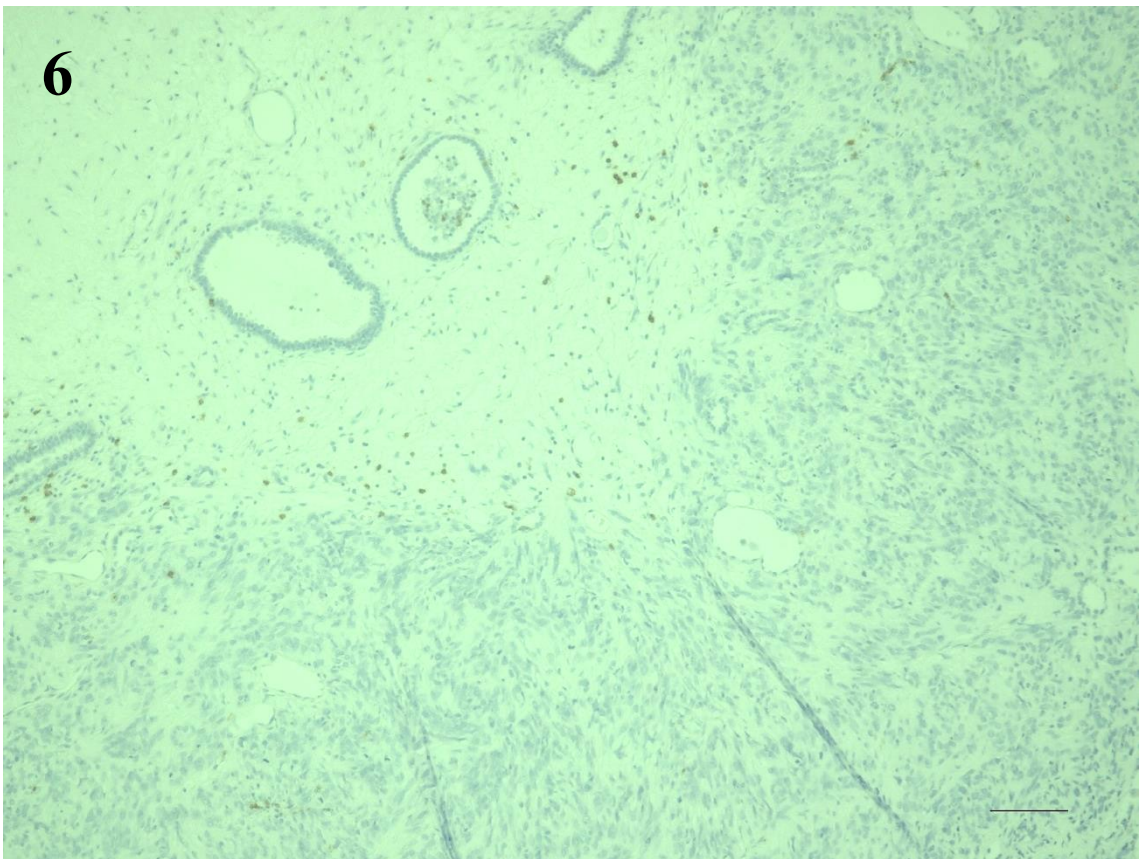
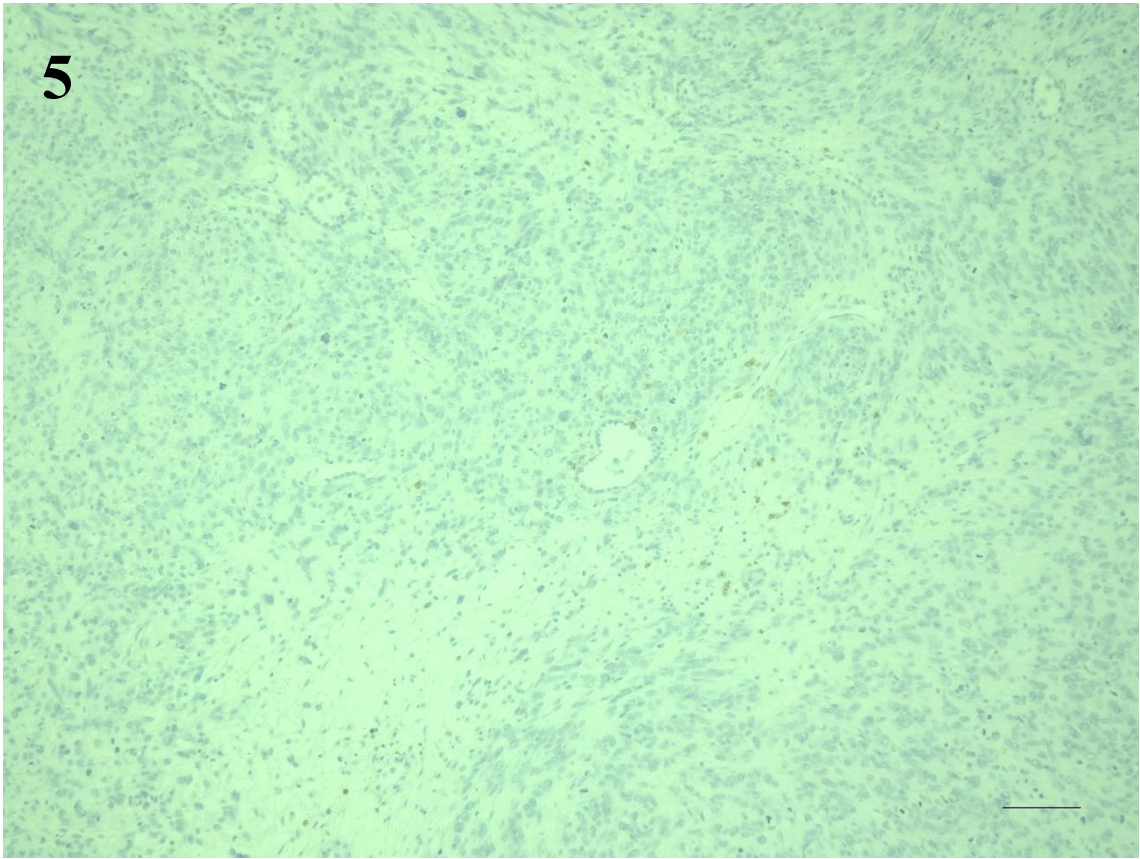
Scale bar corresponds to 100  $\mu\text{m}$ . (Figure1-10)



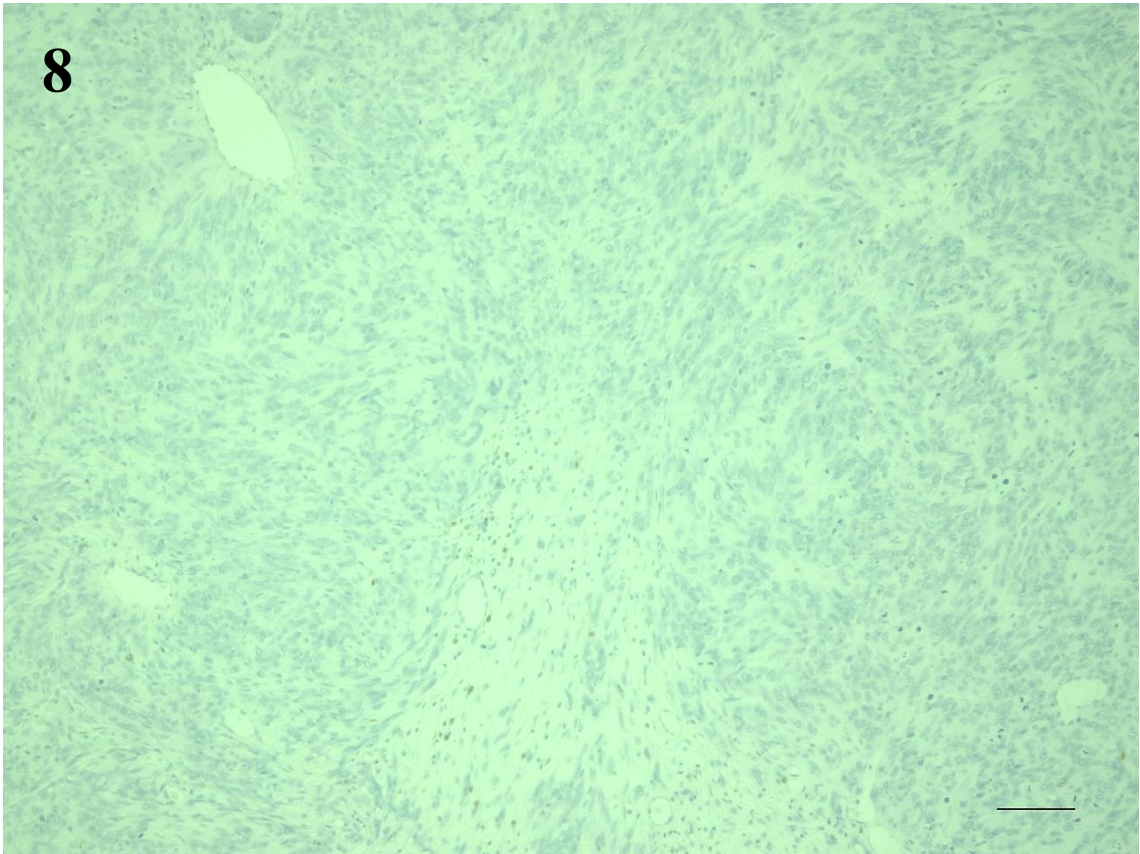
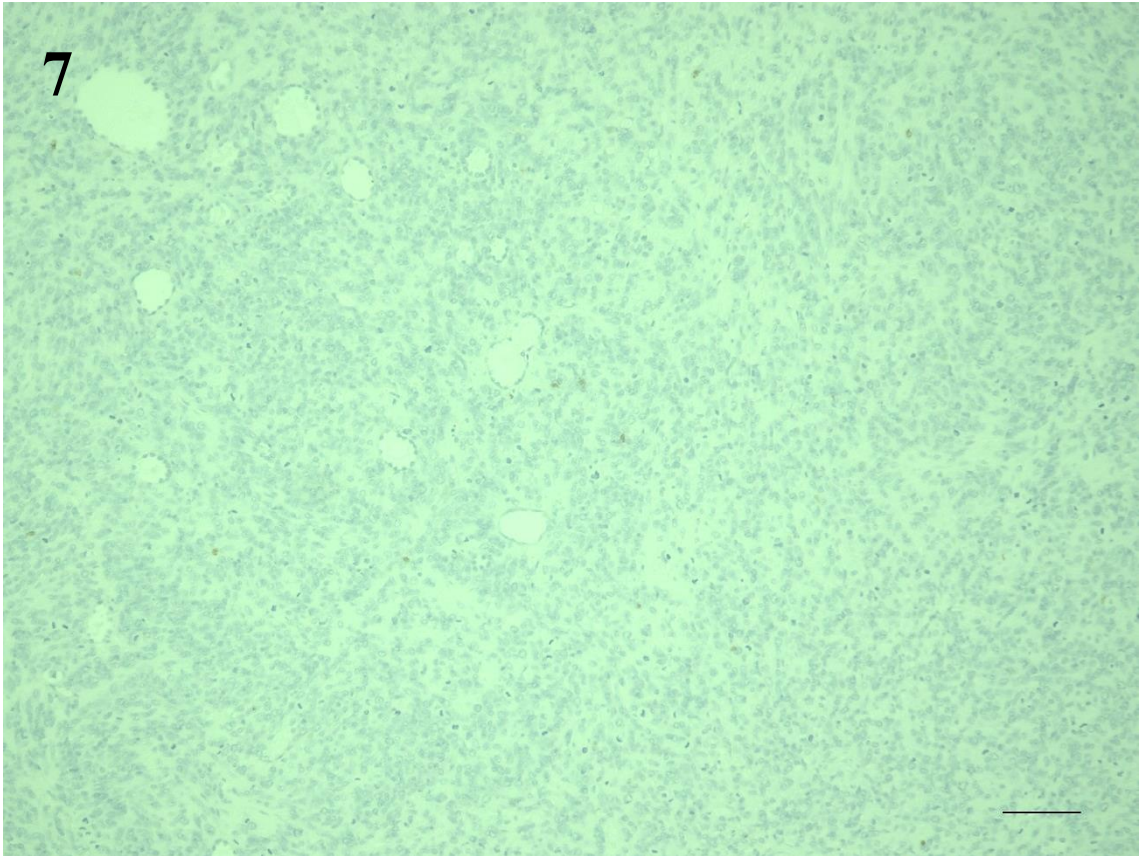






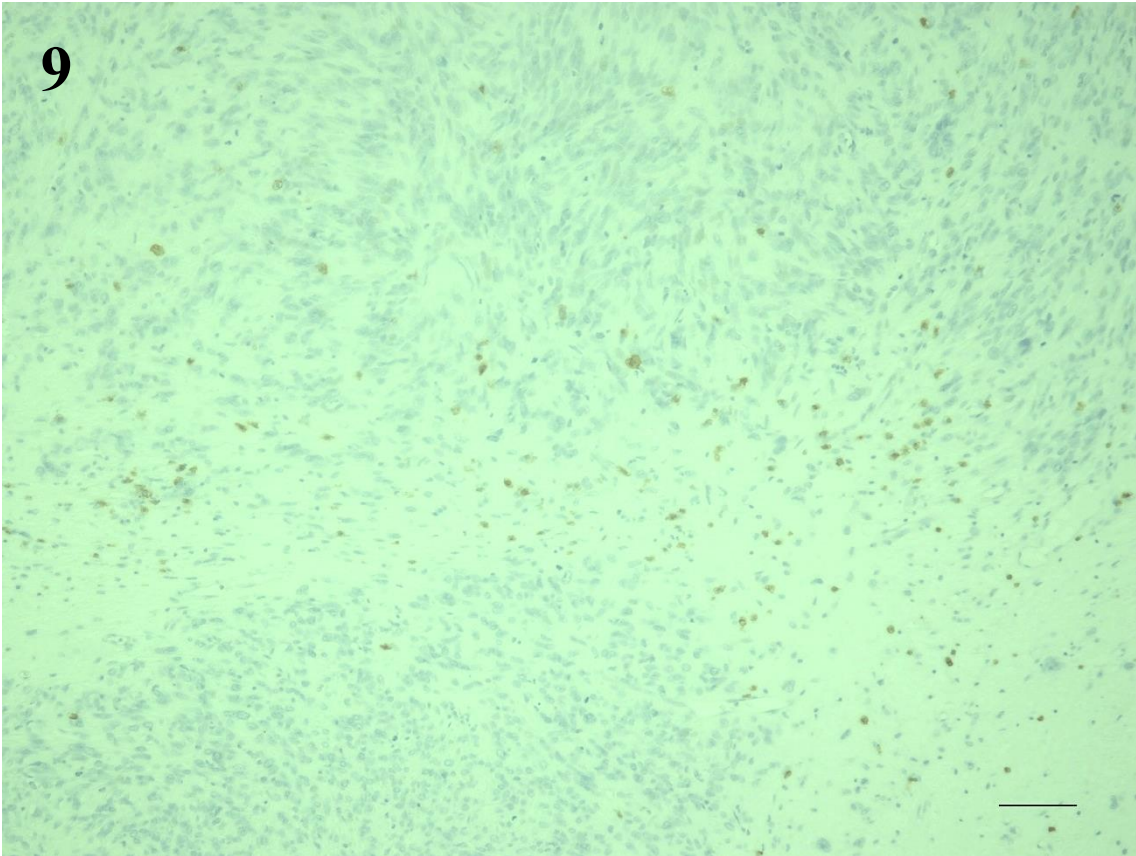




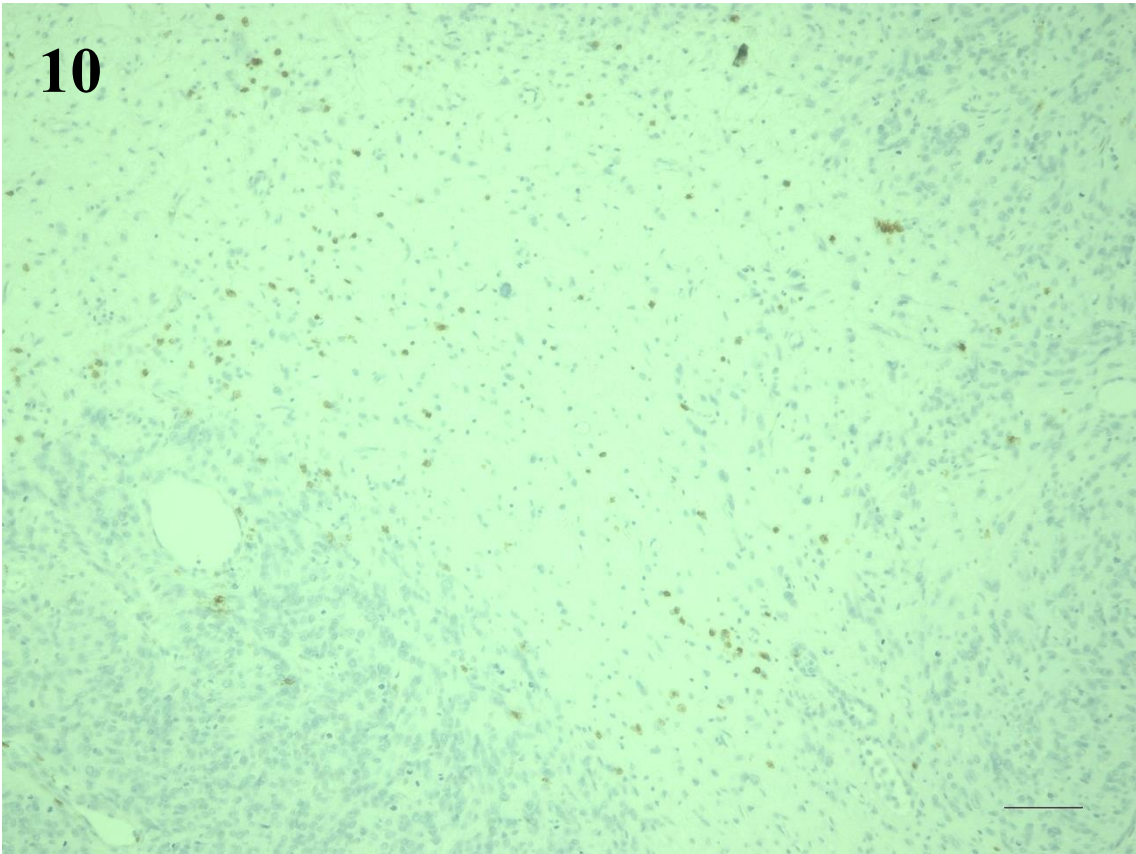




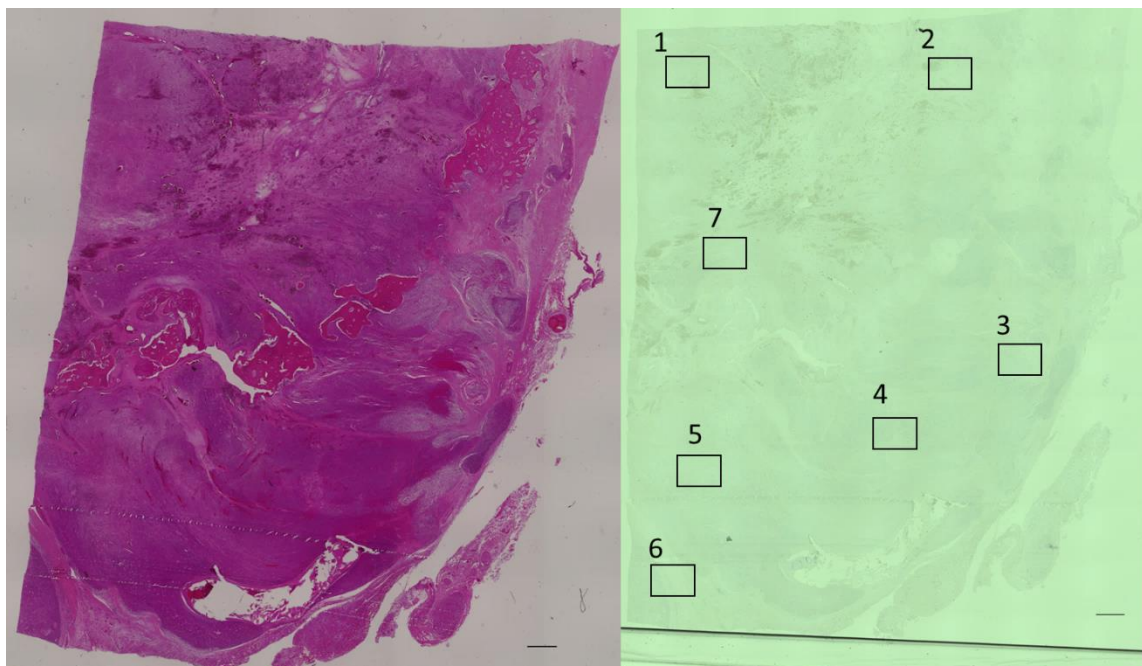
9



10

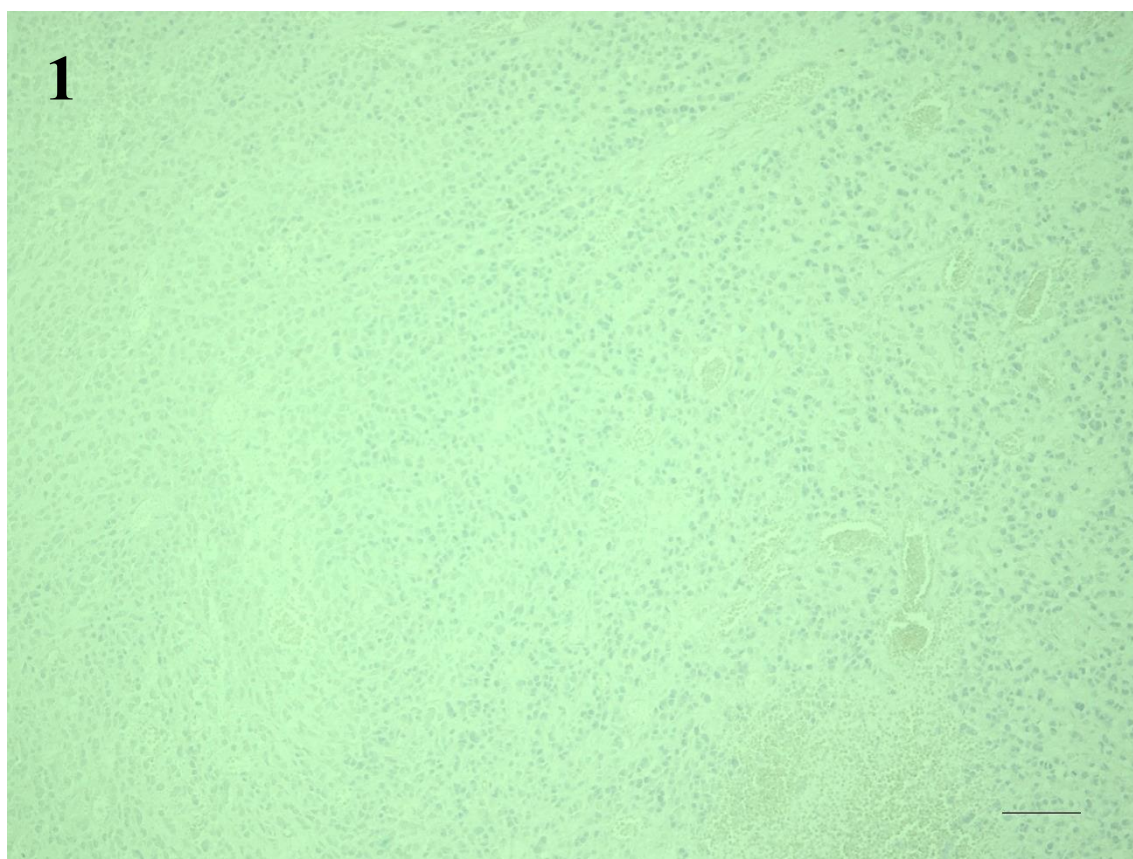


(B) Resected spinal metastasis (Hematoxylin/eosin staining and CD 8 immunostaining)



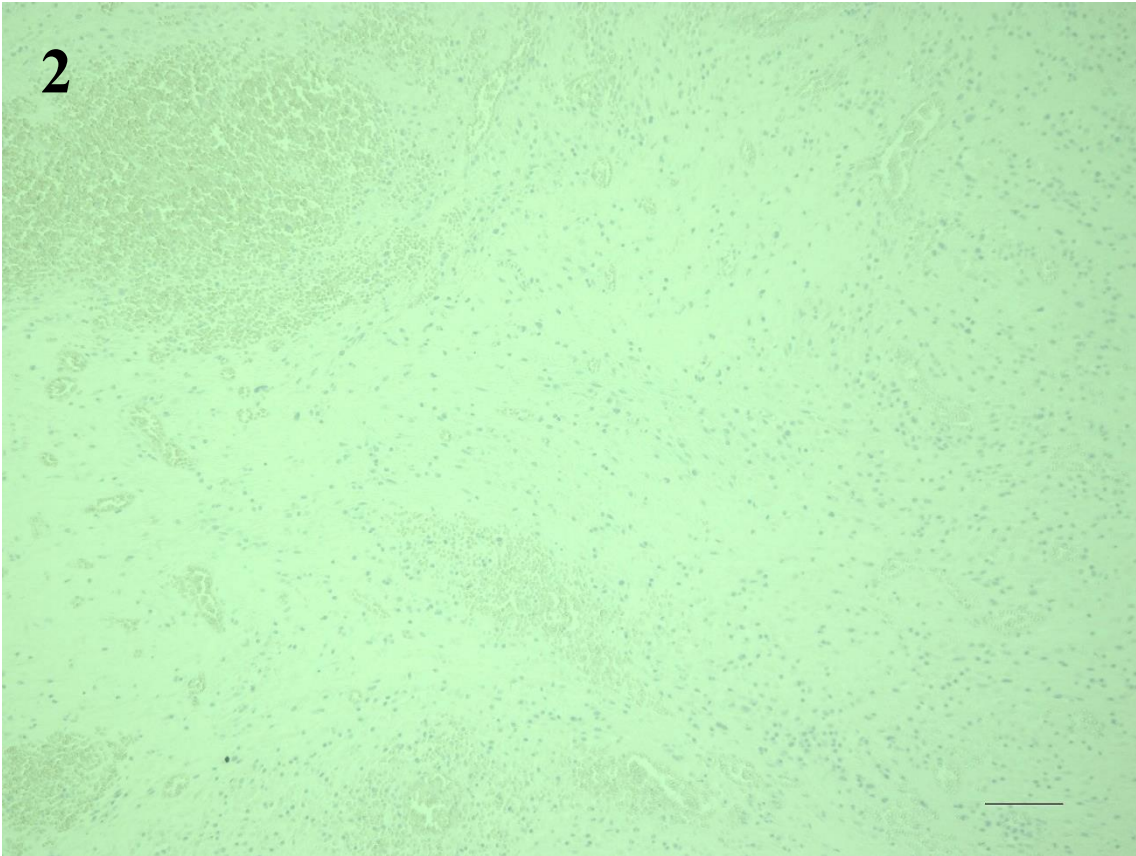
Scale bar corresponds to 1000  $\mu\text{m}$ . (above)

Scale bar corresponds to 100  $\mu\text{m}$ . (Figure1-7)

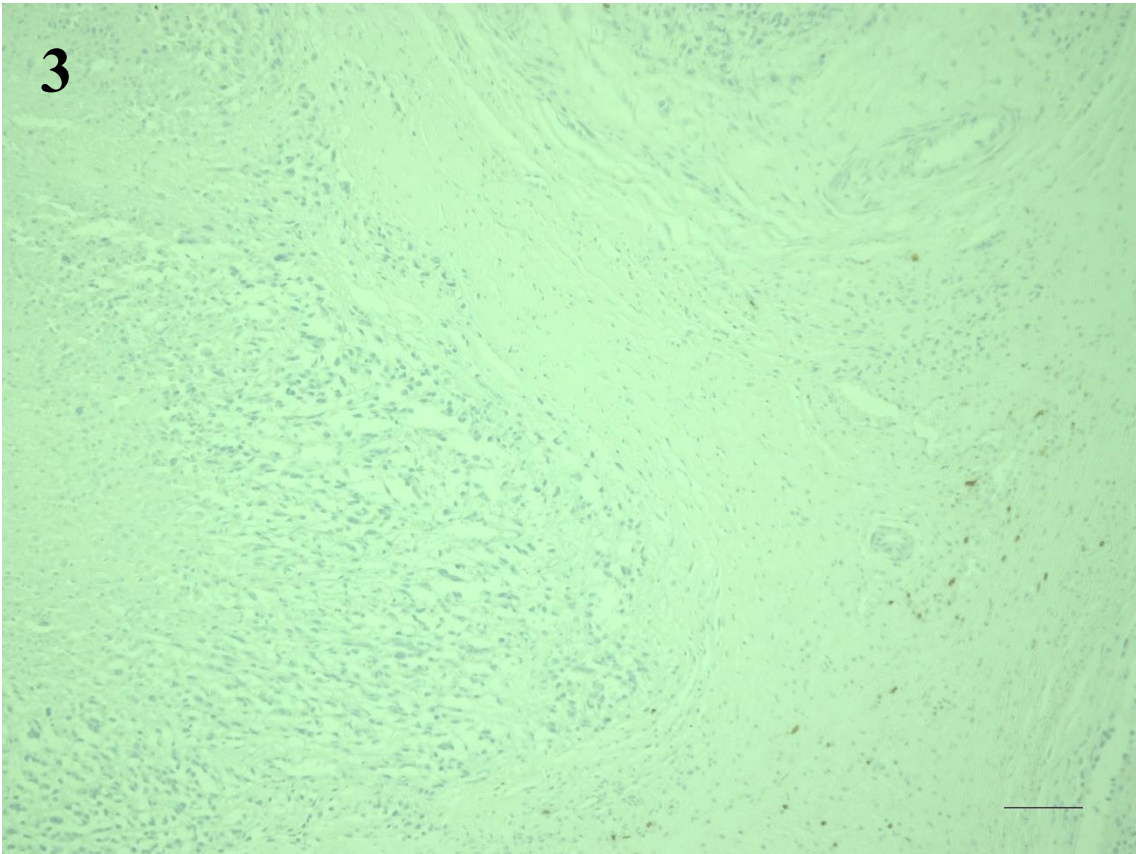




2

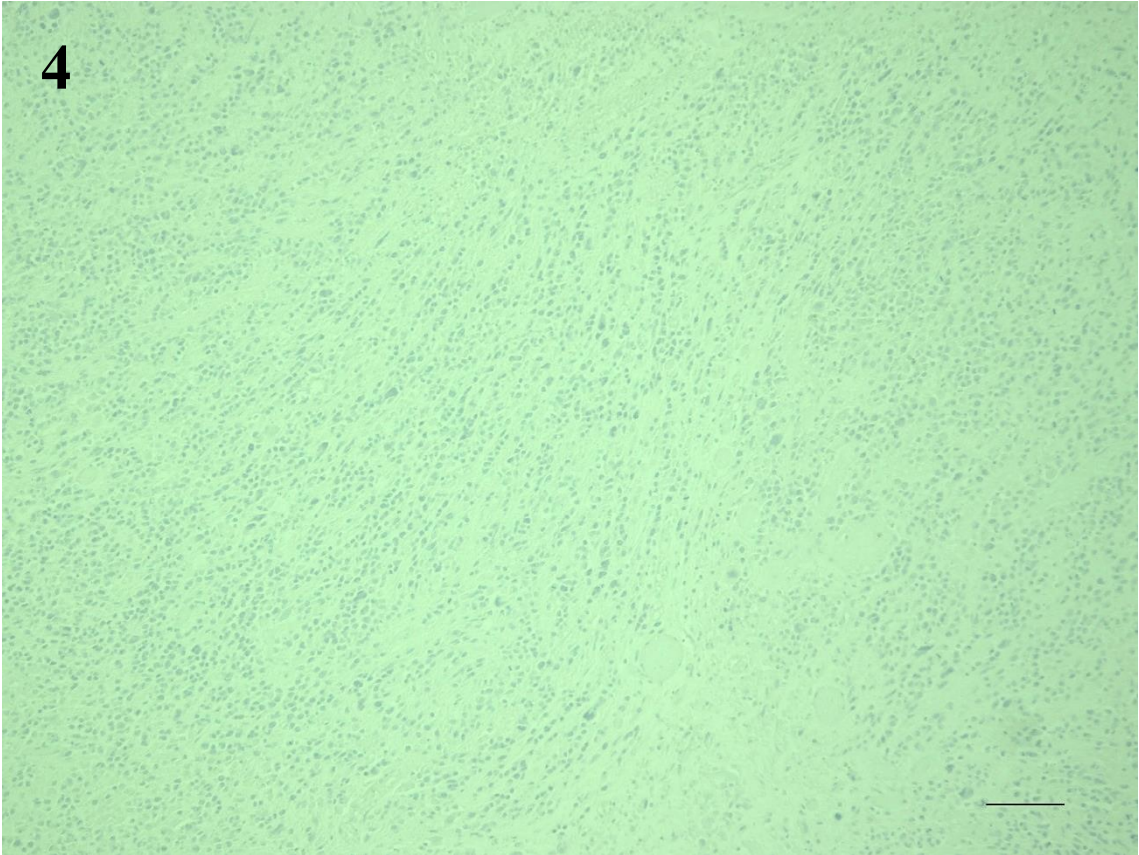


3

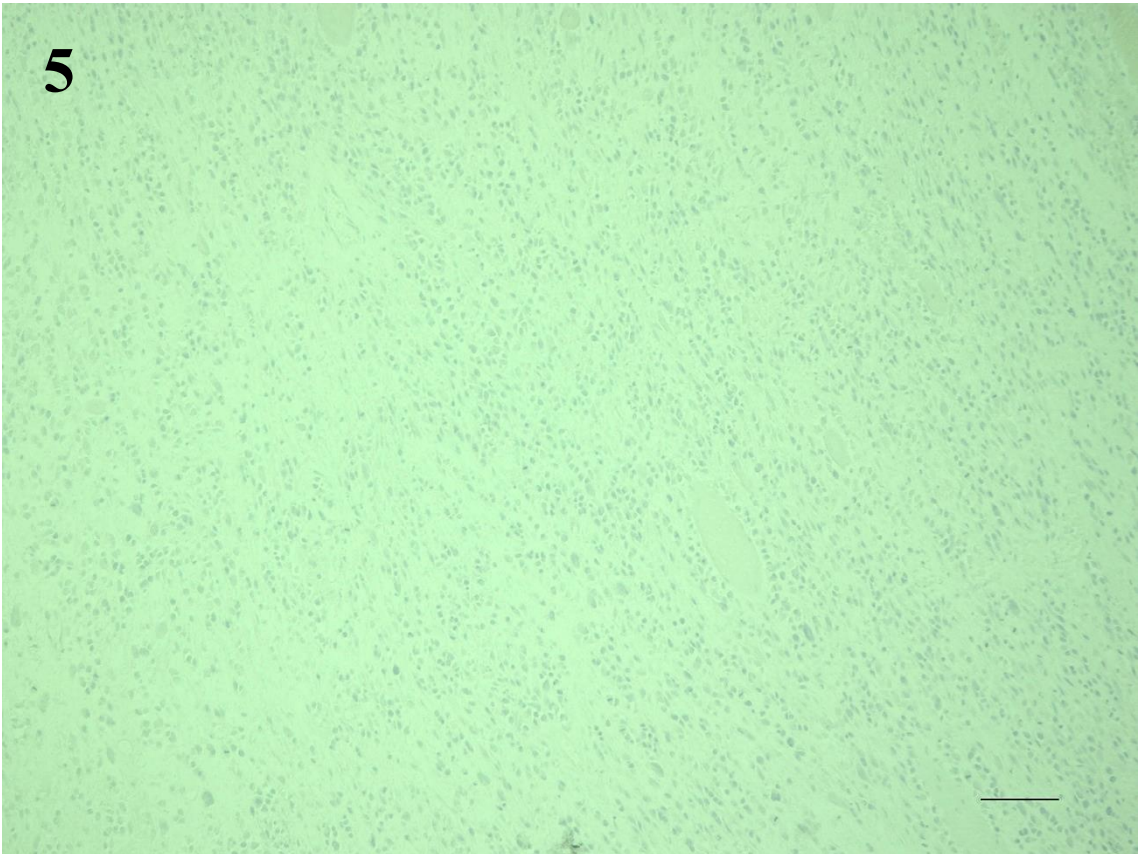


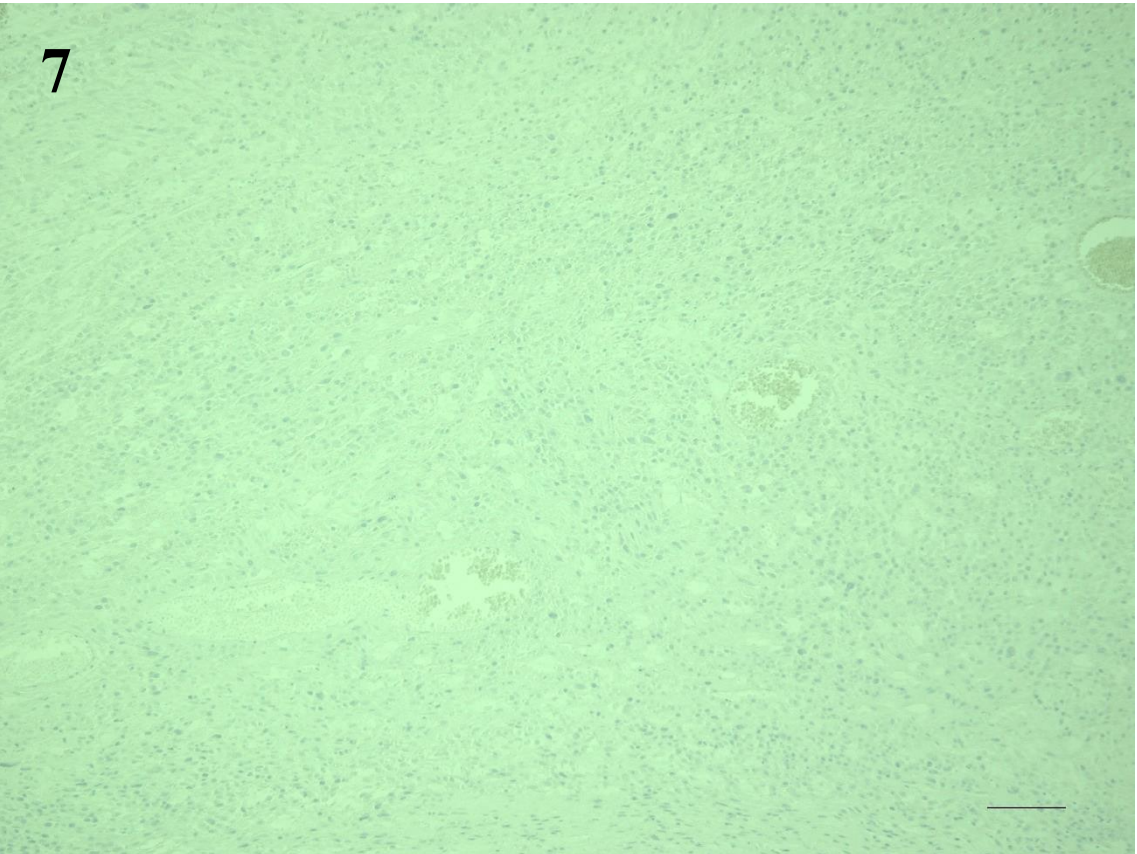
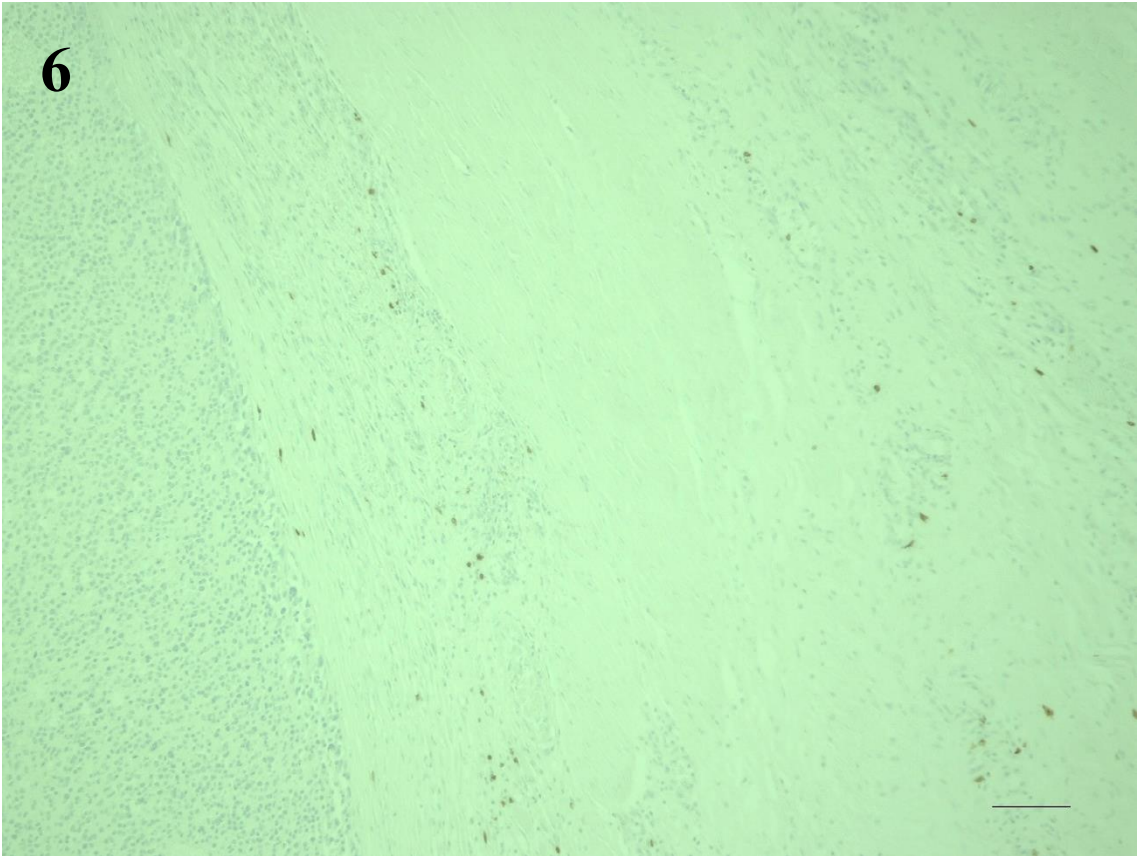


4



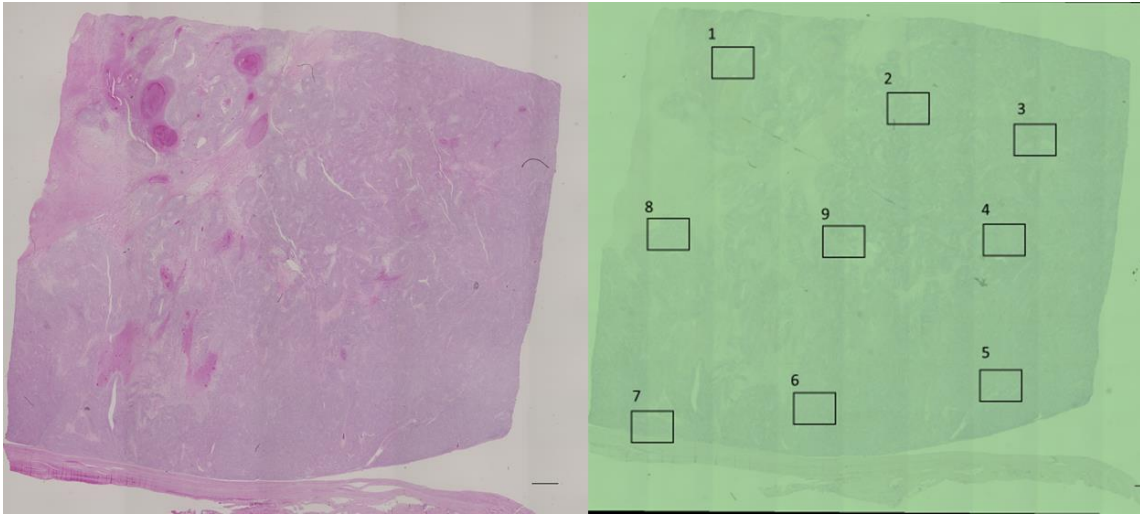
5





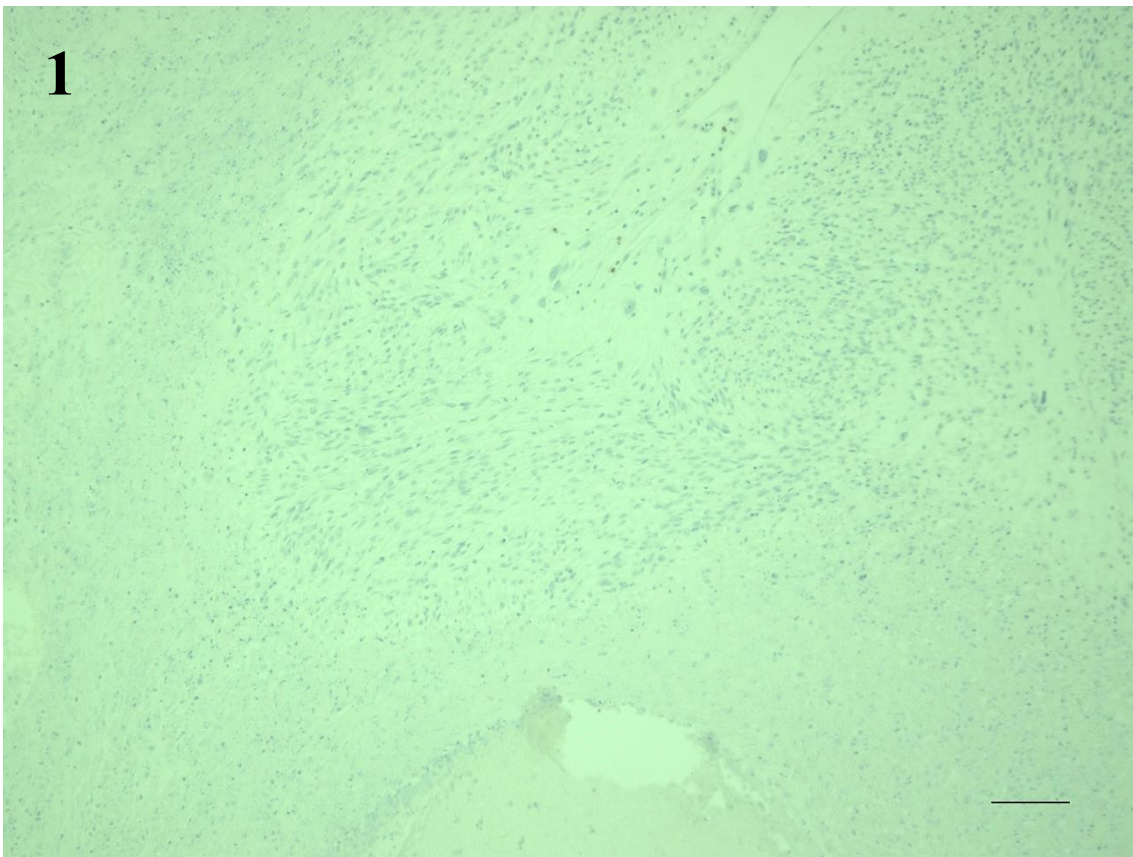


(C) Primary uterine lesion (Hematoxylin/eosin staining and CD 8 immunostaining)

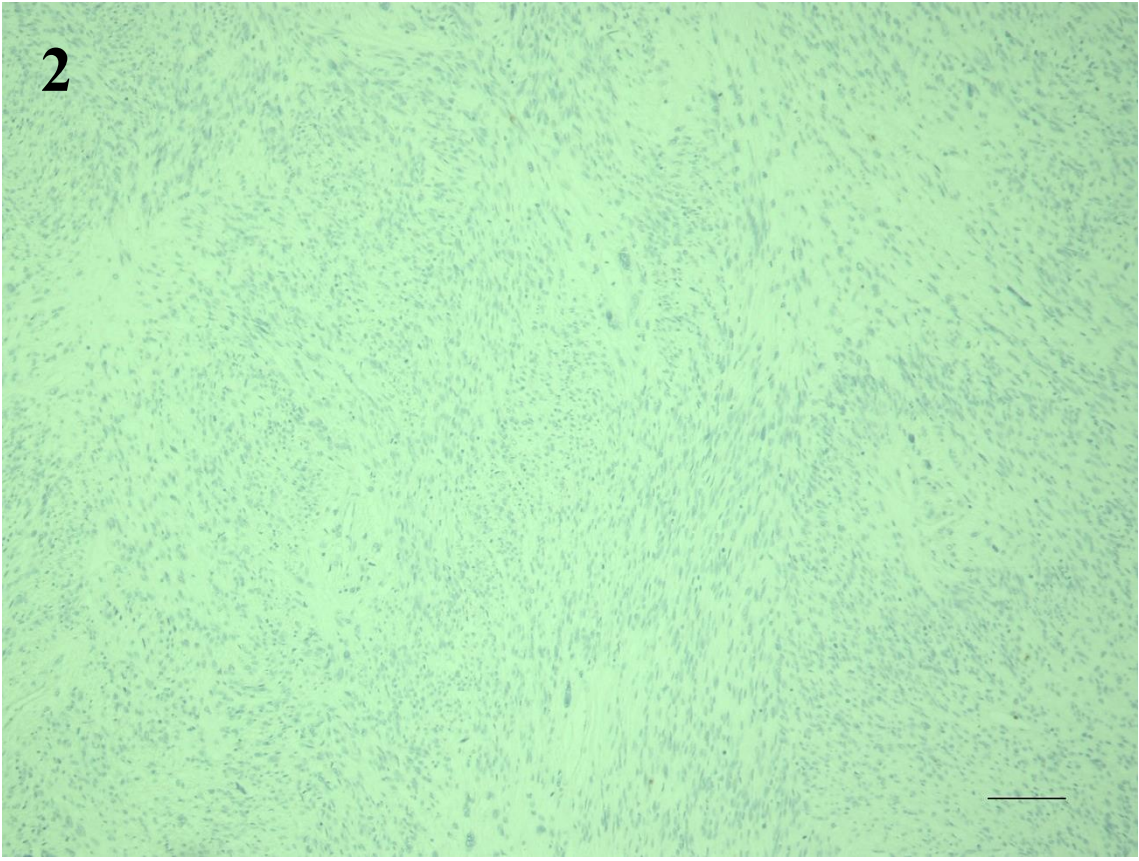


Scale bar corresponds to 1000  $\mu\text{m}$ . (above)

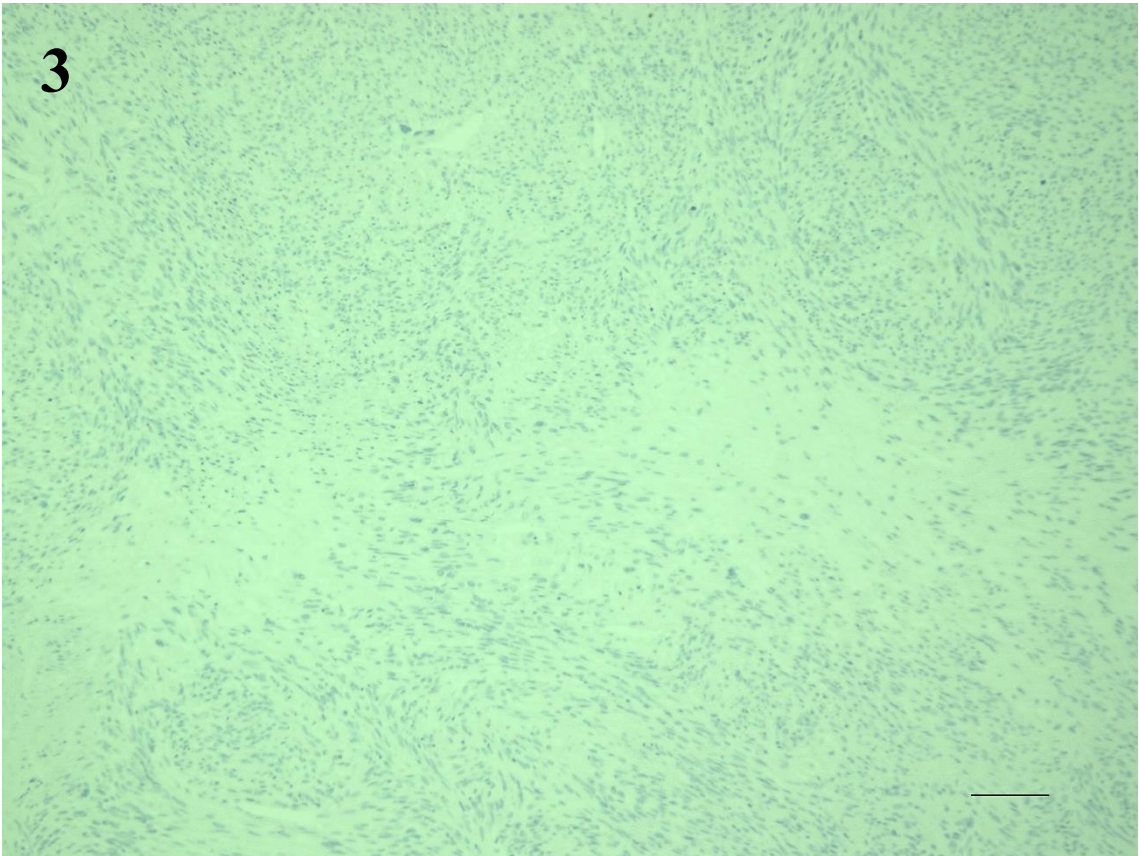
Scale bar corresponds to 100  $\mu\text{m}$ . (Figure1-9)



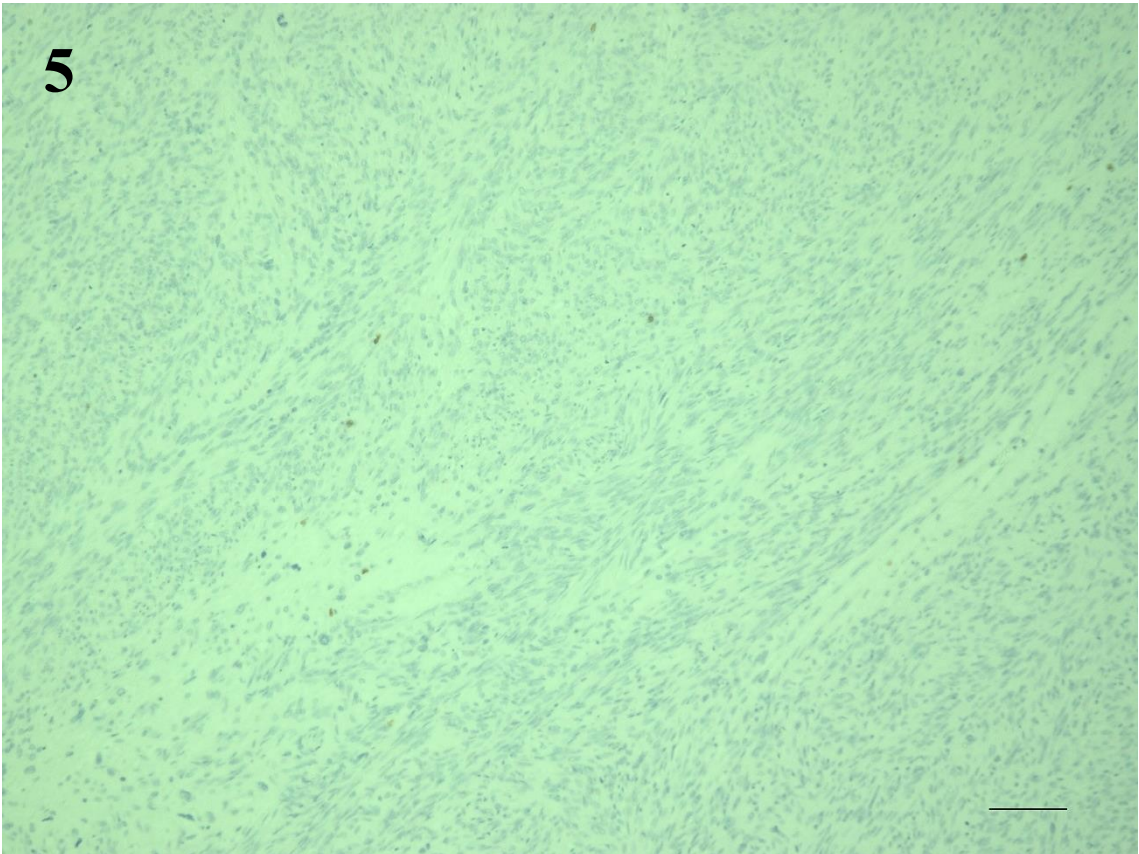
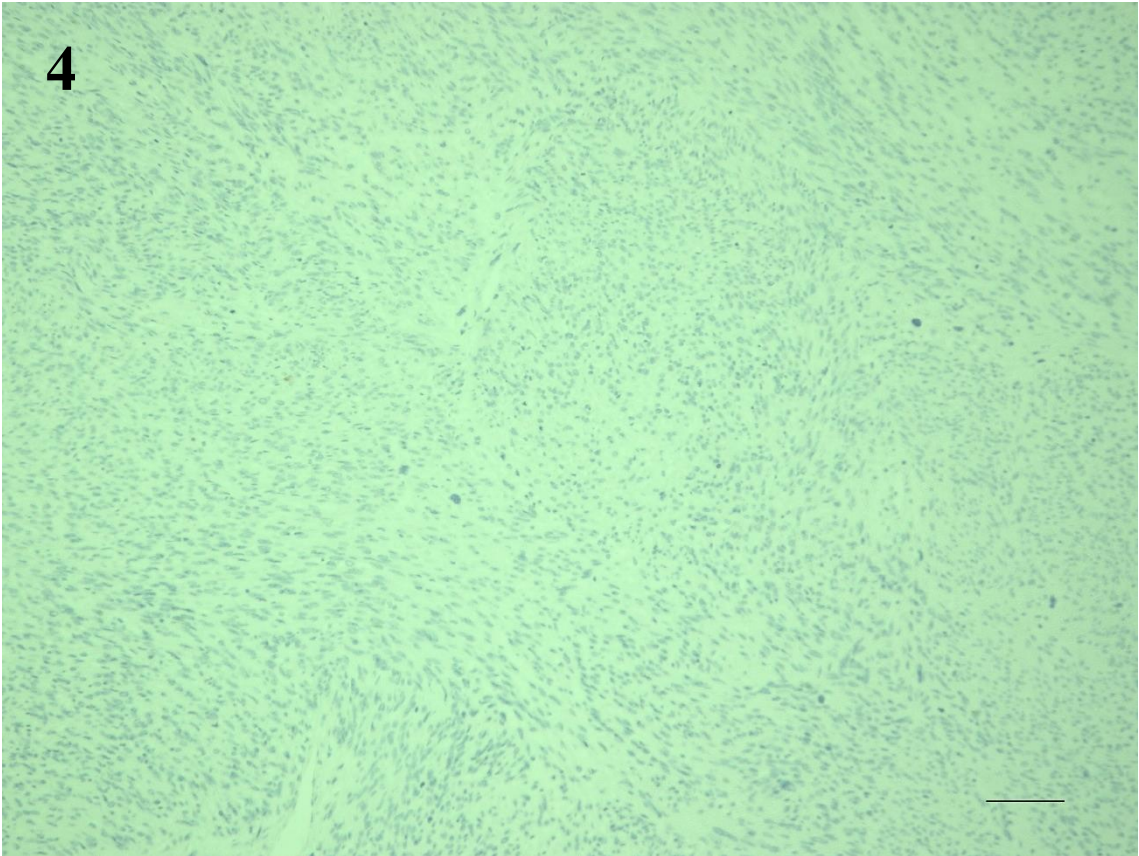
2



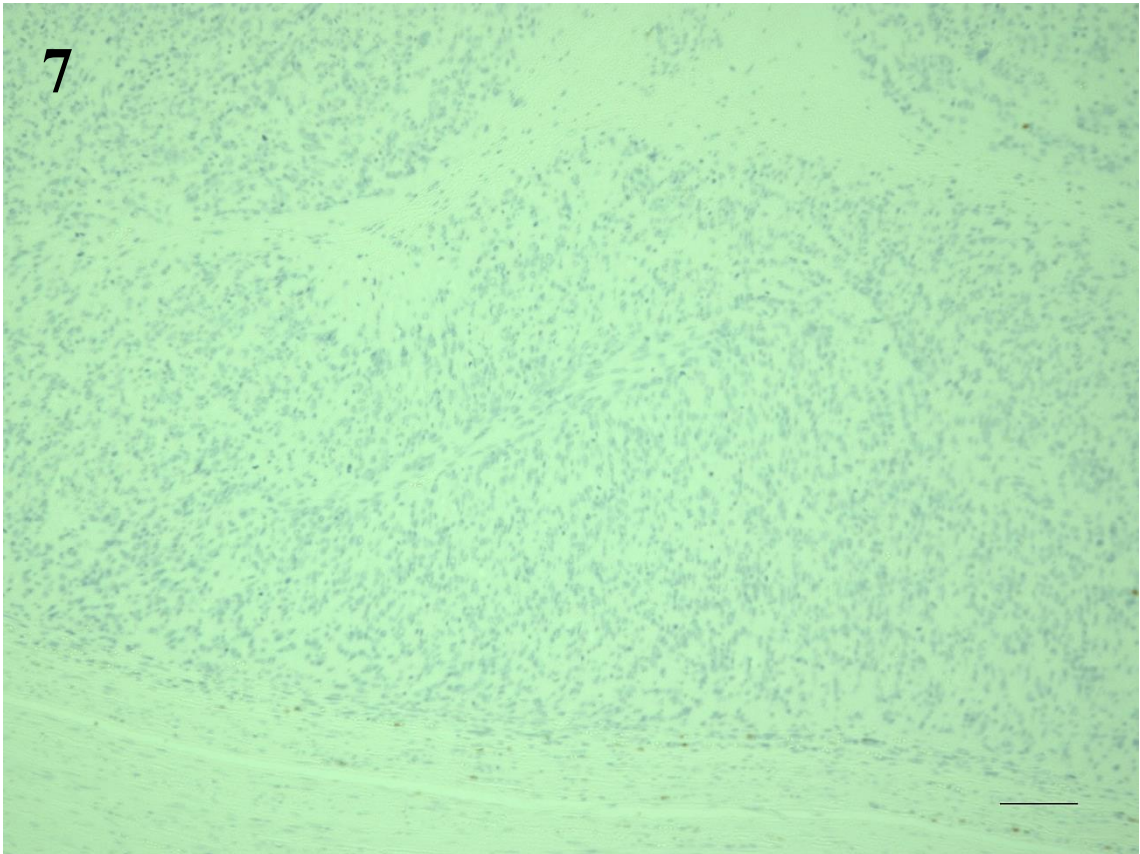
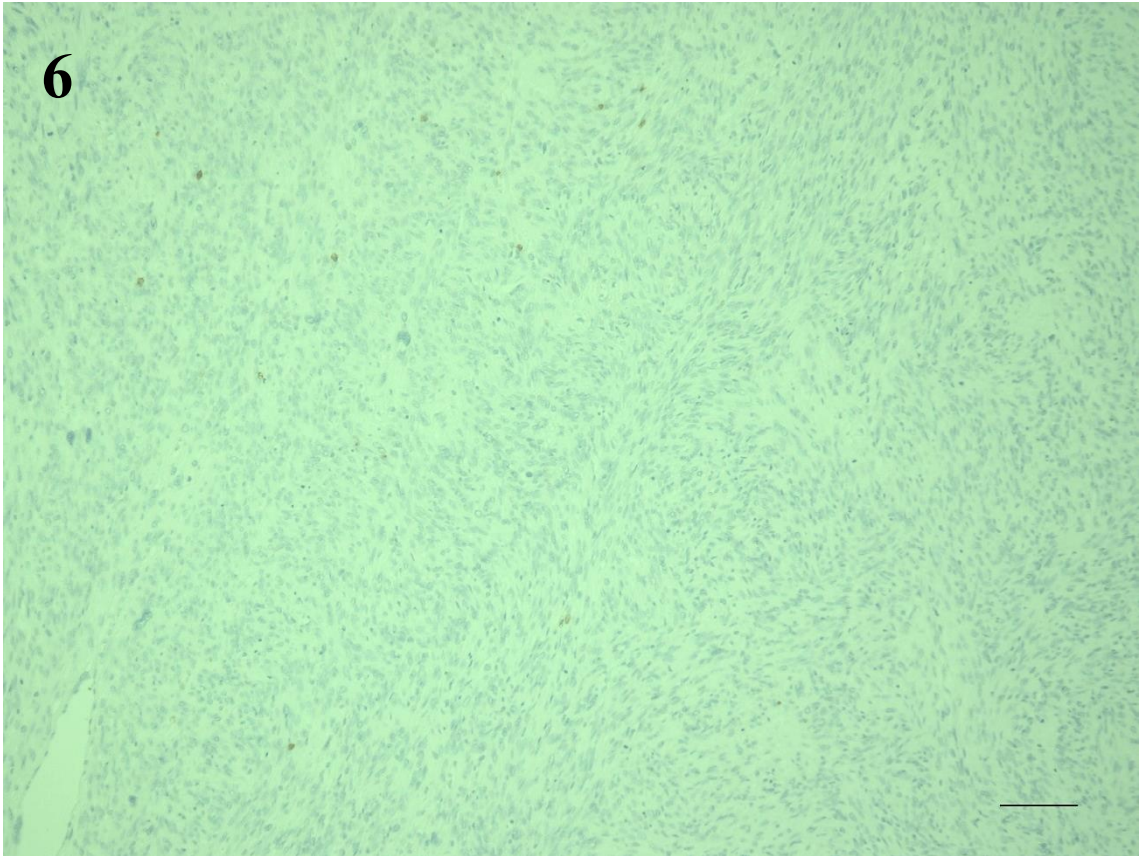
3





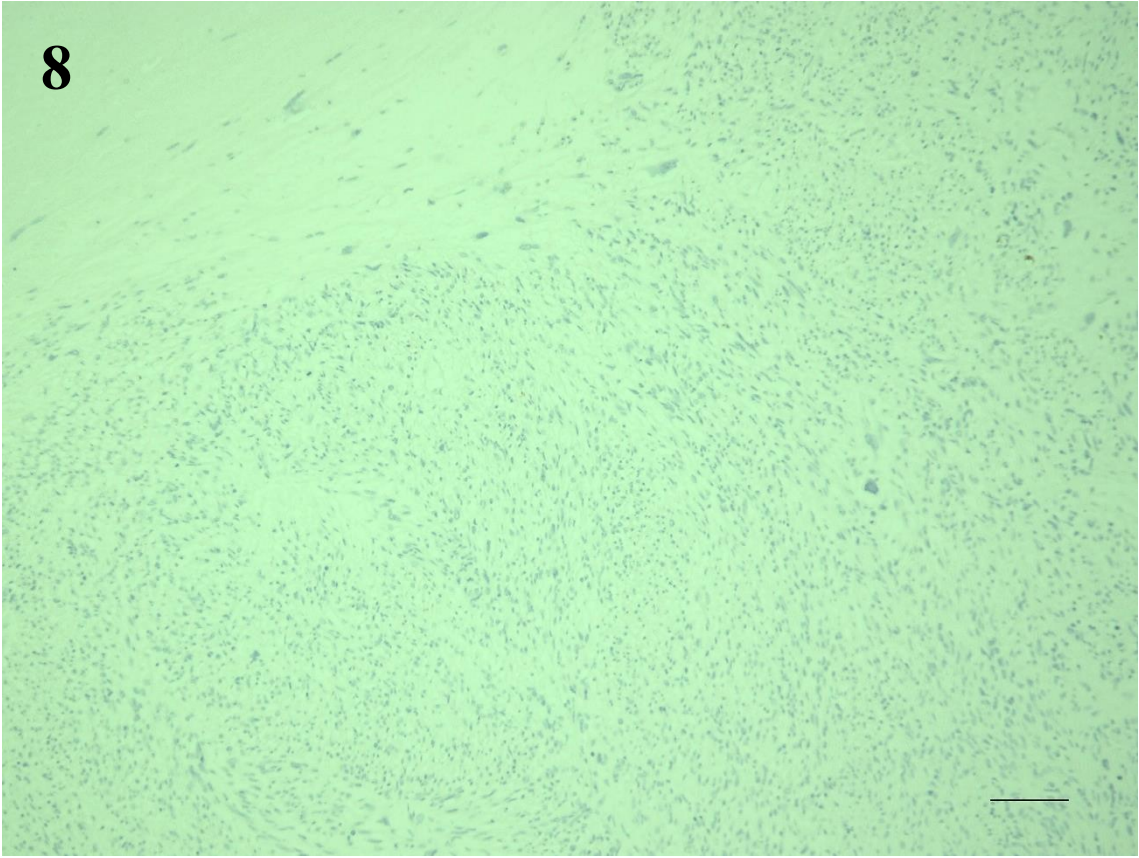








**8**



**9**

